



DATALOG QL

Secure by Design

WWW.CORTECH.CO.UK

DATALOG QL

Datalog QL is our 6th generation software management solution, for the integration of high-security, safety, fire, and building technologies.

● **Cortech Developments**

WHAT IS DATALOG QL ?

Drawing on our deep heritage, extensive knowledge, and wealth of experience from previous Datalog releases, QL is the next natural evolution beyond Datalog 5, our renowned high-security solution that has been deployed globally.

QL represents a complete architectural overhaul, building on our experience since 1992 and delivering vastly improved system efficiency and functionality.

With QL, Cortech can provide your business with the comprehensive interoperability of a huge choice of third-party systems, ranging from CCTV, access control, intruder, perimeter, fire, intercom, staff safety and BMS.

Datalog QL can help you optimise your daily operations whilst reducing your operational costs and protecting your assets.



**Datalog QL - Secure by Design
'robust & secure from the outset'**

WHY DO I NEED DATALOG QL?

In today's rapidly evolving landscape of security and risk management technologies, a forward-thinking integration platform is essential.

With new 'Secure by Design' architecture representing a significant advancement in integration technology, QL brings a host of potential benefits to any organisation.

With QL, you can experience enhanced productivity through centralised configuration, driver separation, and comprehensive auditability of system and configuration.

Designed to streamline operations and elevate security standards.

Datalog QL represents a significant leap in functionality and efficiency.



FEATURES & BENEFITS

QL elevates beyond its predecessor's capabilities, with a host of new key features and benefits.

Cyber-Shield has been developed as a core component with the increasingly hostile cyber environment in mind and verifies all endpoint connections to QL by meticulously verifying third-party integration communications.

Datalog QL combines the advantages of an SQL database, offering greater scalability with robust security features. Its querying capabilities are encrypted, empowering users to retrieve, filter, and analyse data with more efficient query performance.

1:EDITOR AND CONFIG TOOLS

We have created a brand new Editor for QL with the ability to carry out LIVE system 'on the fly' engineering configuration changes. All additions and changes are recorded, accountable and auditable.

This means less system restarts and more importantly; reduced downtime for configuring all system components.



2:WORKFLOW AND THREAT LEVELS

We have added an Intuitive and easy to use workflow tool with QL. Users can now configure individual workflows and templates along with 'dynamic help assistance' to guide and achieve consistency for operational response across their teams.

'Furthermore, we have introduced 'Threat level' escalation within our software which can be activated manually by the operator.

And to add another dimension for the monitoring of your estates 'threat levels' can be integrated into workflow triggers, ensuring they become active only when threat level is activated.

3:CLIENT GRAPHICAL MANAGEMENT WORKSTATIONS

Datalog QL comes with the familiar layout of its predecessors and ease of use operation, but with a modernised look and feel. Now with a choice of new full client, or browser-based alarm handling client workstations.

4:BROWSER WORKSTATION

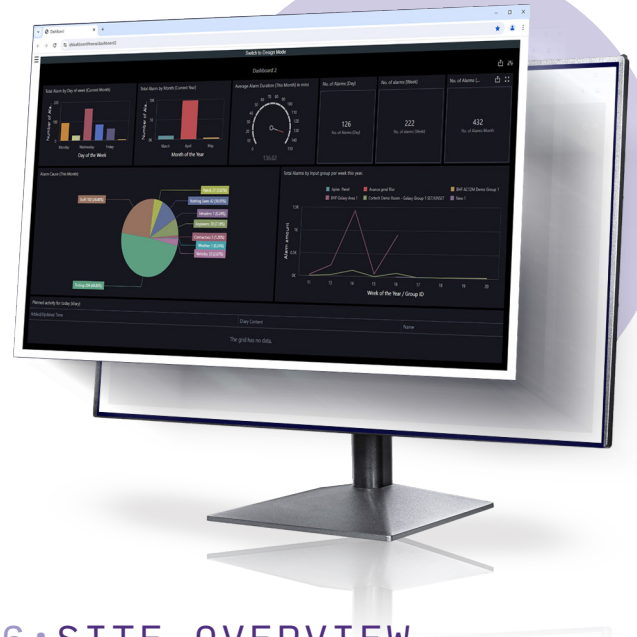
Our Web Client enables operational and security teams to handle alarms from any secure PC on the network, allowing them to work faster and more flexibly in emergent situations. Running on both Chrome and Microsoft Edge, helping you to fully utilise your current hardware investment.



05: WEB BASED DASHBOARD AND ADVANCED REPORTING

Datalog QL offers advanced reporting capabilities, allowing building managers to review events alongside CCTV video replays. The availability of reports, has been further enhanced, by introducing browser-based reporting for managers and key decision-makers.

With a new dynamic dashboard reporting facility, we've provided the ability to surface 'and display operational metrics', 'providing the control room with a holistic view of site activity and operator response.



06: SITE OVERVIEW

Experience the next level of greater situation awareness for your estates with our enhanced 'Site Overview Screens". QL now features the ability to display multiple browser-based 'Site Overview' Mimics' Users are no longer limited to a single Mimic display, allowing for real time monitoring of user defined device or circuit groups, providing a comprehensive overview.

07:IMPROVED DISPLAY FLEXIBILITY







QL also utilises dynamic icons that reflect the real-time status of each circuit group, you'll always be informed of their condition, whether armed, part-armed, unarmed, or in alarm states such as unconfirmed, confirmed, or tamper alarms. For those who require constant surveillance, individual circuits can be displayed persistently on the map, making it ideal for monitoring

08: MV QL VIDEO MANAGEMENT


With the new MV QL Video Management, users can now configure and combine their video walls, displays, and monitors, to run alongside dashboards, site-overviews, and active web pages. With this flexibility, users can monitor multiple data sources simultaneously, enabling them to make informed decisions quickly and efficiently.



OPERATIONAL BENEFITS

-  Cyber-secure architecture
-  Browser Workstation for flexibility
-  Browser-based reporting
-  Situation responsive workflow
-  Intuitive graphical user interface
-  Cyber-Shield core security
-  Integrated operations dashboards
-  Datalog MV video management

TECHNICAL BENEFITS

-  Fast, efficient configuration
-  Backwards-compatible upgrade path
-  Reduced restart requirement
-  Simplified licencing structure
-  Quick and easy add-on installations

WE THOUGHT YOU MIGHT ASK...

01 Is it easy to switch to QL?

Transitioning to QL has been designed with both our current and future customers in mind. While QL introduces a fresh, modern user interface, we've maintained a layout reminiscent of Datalog 5. This familiarity eliminates the need for extensive operator retraining, making the switch to QL as smooth as possible.

02 I have remote sites communicating with my current Datalog 5 control room; do I need to upgrade all sites to QL?

Datalog QL can be installed and will run alongside remote Datalog 5.2 sites. It would be advisable to upgrade existing Datalog 5.2 remote sites to QL to gain wider benefits and increased security resilience across the estate.

03 Can I import my current Datalog 5 setup?

Yes, the upgrade process will include using the Datalog import/export tool to import the Datalog 5 configuration, providing a true migration path.

04 How many devices can QL monitor and control?

Over a million devices.

05 I currently use Datalog 5; when would I need to upgrade?

We strongly advocate for the adoption of QL, given its numerous benefits and advanced features. We understand that our customers may need time to strategise their upgrade from D5. Please be assured Datalog 5 will continue to run alongside Datalog QL.

06 When will Datalog QL be available?

Datalog QL will be available from June 2024 onwards. For those with immediate needs met by Datalog 5, we offer a complimentary upgrade to QL as part of our commitment to your continued success and satisfaction, ensuring a simple transition to our most advanced platform yet.

WHAT HAPPENS NOW? DATALOG QL

You can find out more about Datalog QL and how it can fulfil your specific requirements by contacting Cortech Developments datalogQL@cortech.co.uk.

We are confident that our design philosophy will allow existing users of Datalog to embrace QL's advanced features with minimum time and expense and without the disruption of extensive retraining.

We are excited and optimistic about Datalog QL's potential, and we look forward to you joining us on this new journey!



FIND OUT MORE
WWW.CORTECH.CO.UK



Cortech Developments

UK Office

Cortech Developments - UK Brook House Farm, Withers Lane, Knutsford, Cheshire, WA16 0SG United Kingdom.

Tel: +44 (0) 1925 750 600

Email: sales@cortech.co.uk

Middle East Office

Cortech Developments - Middle East DMCC Office 405, JBC1, Cluster G, Dubai, United Arab Emirates.

Tel: +971 (0) 44 524 256

Email: sales@cortech.ae